



PO Box 13696
Los Angeles, CA 90013

Notice from your new electricity provider, Clean Power Alliance!

You can now enjoy the benefits of clean,
renewable power at competitive rates.

¡Aviso de su nuevo
proveedor de electricidad,
Clean Power Alliance!
Ahora puede disfrutar de
los beneficios de la energía
limpia y renovable con tarifas
competitivas.

來自您的新電力供應商
「清潔電力聯盟」的通知!
您現在能以具有競爭力的
價格享受清潔、可再生電
力的種種益處。

Presorted
Standard U.S.
Postage

PAID

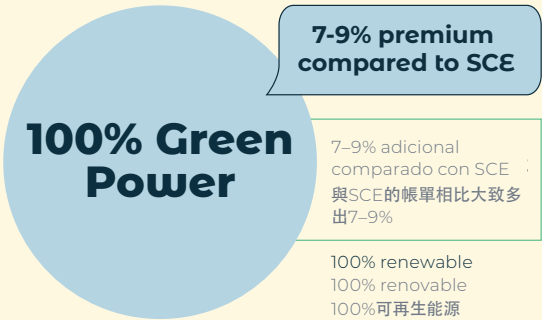
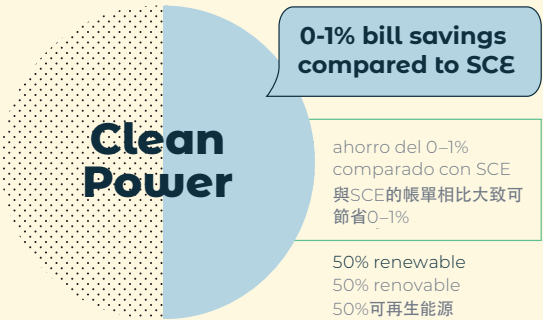
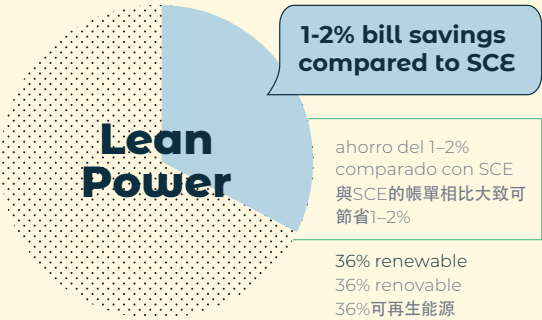
Los Angeles, CA
Permit No 2342



To learn more, change your rate, or opt out, visit cleanpoweralliance.org/rates
or call us at 888-585-3788 (TTY 323-214-1296). Our call center speaks 26 languages!

Your Rate Options

Clean Power Alliance offers three competitively priced options for electricity at your home or business. Your city or county chose Clean Power as your default rate, but you can choose to change your rate or opt out and choose SCE as your energy supplier by visiting cleanpoweralliance.org/rates or calling 888-585-3788.



Pricing shown above is for a typical residential or business customer. Select commercial rates may be higher. Please contact Clean Power Alliance for more information.
Las tarifas arriba están para clientes residenciales o de negocio típicos. Algunas tarifas comerciales podrían ser más altas. Por favor, contacte a Clean Power Alliance para más información.

下面列出的价格适用于一般住宅客户或企业客户。某些商业电费价格可能较高。如需更多信息，请联系清洁电力联盟。

Terms and Conditions of Service

Clean Power Alliance electric generation rates are competitive. Available rates can be reviewed at cleanpoweralliance.org or by contacting Clean Power Alliance at 888-585-3788 (TTY 323-214-1296). **Clean Power Alliance rates are subject to change and changes will be adopted at duly noticed public meetings of the Clean Power Alliance Board of Directors.**

Southern California Edison (SCE) collects from Clean Power Alliance customers authorized charges for delivering power to your home or business and for providing other services. These components of your electric bill are the same whether you buy electricity from Clean Power Alliance or SCE.

Southern California Edison also charges Clean Power Alliance customers a Power Charge Indifference Adjustment (PCIA) and a Franchise Fee Surcharge. Both are calculated based on the number of kilowatt hours used each month. The PCIA is intended to ensure that customers who switch to Clean Power Alliance pay for energy that was acquired by SCE to serve them prior to their switch. Note that Clean Power Alliance rates are competitive with SCE's rates, even with these fees.

Billing: Each month, Clean Power Alliance customers receive a single monthly bill from SCE, just as they would under SCE bundled service. This bill includes all electric charges, including Clean Power Alliance's power generation charges. SCE will continue to charge you for transmission and distribution services they provide; this includes the cost of transmitting electricity to your home or business.

Enrollment: You were automatically enrolled in Clean Power Alliance when you began electric service on this account.

Sus opciones de tarifa Clean Power Alliance ofrece tres opciones de electricidad con precios competitivos para su hogar o empresa. Su ciudad o condado escogieron Clean Power (Energía Limpia, 50% renovable) como su tarifa predeterminada, pero puede optar por cambiar su tarifa u optar por dejar el servicio y escoger a SCE como su proveedor de energía visitando cleanpoweralliance.org/rates o llamando al 888-585-3788.

您的費率方案 清潔電力聯盟為您住宅或企業提供三種價格具有競爭力的電力方案。貴市或貴縣選定 Clean Power (清潔電力) 作為您的預設方案，不過您可以透過造訪cleanpoweralliance.org/rates或致電 888-585-3788。

Discount Programs: If you are currently enrolled in the California Alternative Rates for Energy (CARE) program, the Family Electric Rate Assistance (FERA) program, Medical Baseline, Level Pay or Summer Discount Program, you will continue to receive all benefits and discounts as a Clean Power Alliance customer.

Opt out: You have the right to opt out without penalty at any time. You will not be charged any fees by Clean Power Alliance if you opt out or if you cancel electric service altogether (for example, if you move). However, customers who opt out of Clean Power Alliance after service launch may be charged a one-time account processing fee by SCE (currently 50 cents*), and will be prevented by SCE from returning to Clean Power Alliance for a minimum of twelve months. By opting out, you will also be subject to SCE's then current rates and terms and conditions of service. For details on SCE's rates and terms and conditions, please visit sce.com/tnc. If you opt out, you will still be charged for all electricity you used before the transfer of electric service. Accounts will be transferred when the electric meter is read and cannot be transferred during the middle of a billing cycle. In order for your request to be processed on your next meter read date, your request must be received at least 5 business days prior to the date on which the meter is read. To opt out, please call Clean Power Alliance at 888-585-3788 (TTY 323-214-1296) or visit cleanpoweralliance.org. Please have your electric bill handy so you have the information needed to process the request.

Failure to pay: Clean Power Alliance may transfer your account to SCE upon 14 calendar days' written notice to you if you fail to pay any portion of the Clean Power Alliance charges on your bill. If your service is transferred, you may be subject to additional requirements by SCE.

**SCE's one-time account processing fee is subject to change. View SCE's fees at www.sce.com/regulatory/tariff-books.*

Access terms and conditions in other languages at cleanpoweralliance.org.