



PO Box 13696
Los Angeles, CA 90013

¡Aviso de su nuevo proveedor de electricidad, Clean Power Alliance!
Usted ahora disfruta de las ventajas de la energía limpia y renovable con tarifas competitivas.

來自您的新電力供應商,清潔電力聯盟的通知! 您現在可以以具有競爭力的價格享受清潔能源的好處。打開來了解您的新選項。

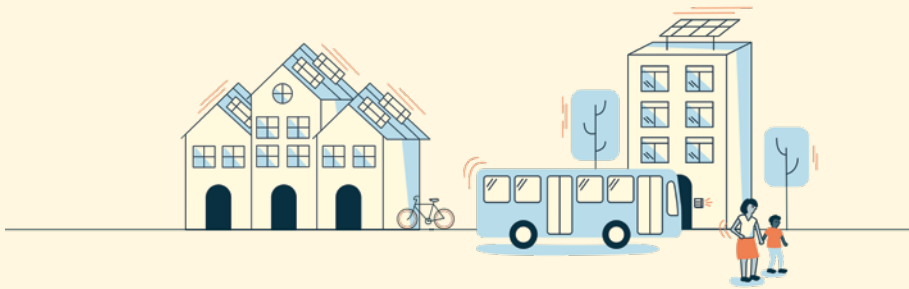
Presorted
Standard U.S.
Postage

PAID

Los Angeles, CA
Permit No 2342

Notice from your new electricity provider, Clean Power Alliance!

You now enjoy the benefits of clean, renewable power at competitive rates.



Access terms and conditions in other languages at cleanpoweralliance.org.

Terms and Conditions of Service

Clean Power Alliance electric generation rates are competitive. Available rates can be reviewed at cleanpoweralliance.org or by contacting Clean Power Alliance at 888-585-3788 (TTY 323-214-1296). Any changes to Clean Power Alliance rates will be adopted at duly noticed public meetings of the Clean Power Alliance Board of Directors.

Southern California Edison (SCE) collects from Clean Power Alliance customers authorized charges for delivering power to your home or business and for providing other services. These components of your electric bill are the same whether you buy electricity from Clean Power Alliance or SCE.

Southern California Edison also charges Clean Power Alliance customers a Power Charge Indifference Adjustment (PCIA) and a Franchise Fee Surcharge. Both are calculated based on the number of kilowatt hours used each month. The PCIA is intended to ensure that customers who switch to Clean Power Alliance pay for energy that was acquired by SCE to serve them prior to their switch. Note that Clean Power Alliance rates are competitive with SCE's rates, even with these fees.

Billing: Each month, Clean Power Alliance customers receive a single monthly bill from SCE, just as they would under SCE bundled service. This bill includes all electric charges, including Clean Power Alliance's power generation charges. SCE will continue to charge you for transmission and distribution services they provide; this includes the cost of transmitting electricity to your home or business.

Enrollment: You were automatically enrolled in Clean Power Alliance, unless you opted out, on your scheduled meter read date on or following September 1, 2020.

Discount Programs: If you are currently enrolled in the California Alternate Rates for Energy (CARE) program, the Family Electric Rate Assistance (FERA) program, Medical Baseline, Level Pay or Summer Discount Program, you will continue to receive all benefits and discounts as a Clean Power Alliance customer.

Opt out: You have the right to opt out without penalty at any time. You will not be charged any fees by Clean Power Alliance if you opt out or if you cancel electric service altogether (for example, if you move). However, customers who opt out of Clean Power Alliance after service launch may be charged a one-time account processing fee by SCE (currently 50 cents*), and will be prevented

by SCE from returning to Clean Power Alliance for a minimum of twelve months. By opting out, you will also be subject to SCE's then current rates and terms and conditions of service. For details on SCE's rates and terms and conditions, please visit sce.com/tnc. If you opt out, you will still be charged for all electricity you used before the transfer of electric service. Accounts will be transferred when the electric meter is read and cannot be transferred during the middle of a billing cycle. In order for your request to be processed on your next meter read date, your request must be received at least 5 business days prior to the date on which the meter is read. To opt out, please call Clean Power Alliance at 888-585-3788 (TTY 323-214-1296) or visit cleanpoweralliance.org. Please have your electric bill handy so you have the information needed to process the request.

Failure to pay: Clean Power Alliance may transfer your account to SCE upon 14 calendar days' written notice to you if you fail to pay any portion of the Clean Power Alliance charges on your bill. If your service is transferred, you may be subject to additional requirements by SCE.

**SCE's one-time account processing fee is subject to change. View SCE's fees at www.sce.com/regulatory/tariff-books.*

To learn more, change your rate, or opt out and return to SCE, visit cleanpoweralliance.org or call us at 888-585-3788 (TTY 323-214-1296).

Puede leer los términos y condiciones en otros idiomas en cleanpoweralliance.org. Para informarse más, cambiar su tarifa u optar por dejar el servicio y regresar a SCE, llámenos al 888-585-3788 (TTY 323-214-1296) o visite cleanpoweralliance.org/es.

獲取其他語言版本的條款和條件,請造訪cleanpoweralliance.org。了解詳情,更改您費率或退出並返回SCE,請致電888-585-3788(TTY 323-214-1296)與我們聯繫,或造訪cleanpoweralliance.org/zh。



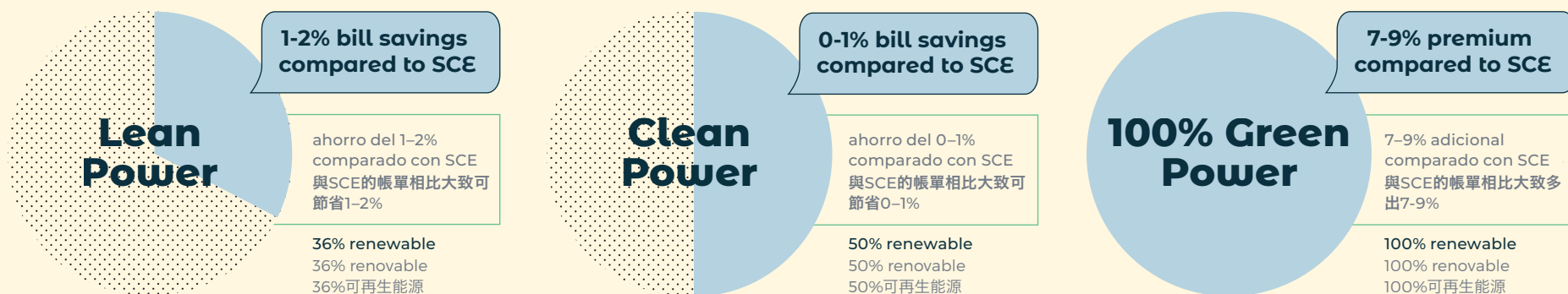
How does it work?

Starting **September 2020**, you became a Clean Power Alliance customer on the rate option chosen by your community (Lean Power), or the one you selected. You are now part of a local community dedicated to procuring more renewable energy at competitive rates. Clean Power Alliance purchases your power and Southern California Edison (SCE) continues to deliver it. SCE will also continue to send your electricity bills and resolve any service issues. Qualified customers will continue to receive financial assistance, rebates, and incentives. Please note your neighbors may have already started Clean Power Alliance service, but due to an SCE system issue, your enrollment with us was delayed.

What are the benefits?

If you do nothing, you will continue at your community's default rate of Lean Power, with a 1-2% overall bill savings compared to SCE. Or you can explore our other rate options that offer more renewable energy and the chance to be an environmental champion at comparable costs: Clean Power provides a 0-1% overall bill savings compared to SCE and 100% Green Power provides a 7-9% overall bill premium compared to SCE. Compare your Clean Power Alliance and SCE rate options at cleanpoweralliance.org/compare to decide which option is best for you. No matter the rate, Clean Power Alliance offers the shared benefits of local management and control, competitive rates, and higher renewable content.

To learn more, change your rate, or opt out and return to SCE, visit cleanpoweralliance.org or call us at 888-585-3788 (TTY 323-214-1296).



Pricing is for a typical residential or business customer. Select commercial rates may be higher. Contact Clean Power Alliance for more information.

¿Cómo funciona?

A partir de **setiembre de 2020**, usted se convirtió en cliente de Clean Power Alliance con la opción de tarifa escogida por su comunidad (Lean Power) o la que usted seleccionó. Usted es ahora parte de una comunidad local dedicada a obtener más energía renovable con tarifas competitivas. Clean Power Alliance compra su energía y Southern California Edison (SCE) la sigue entregando. SCE también seguirá enviándole sus facturas de electricidad y resolviendo cualquier problema con el servicio. Los clientes que reúnen los requisitos seguirán recibiendo asistencia económica, reembolsos e incentivos. Por favor tenga en cuenta que es posible que sus vecinos ya hayan empezado el servicio con Clean Power Alliance, pero debido a un problema con el sistema de SCE, se retrasó su inscripción con nosotros.

¿Cuáles son los beneficios?

Si no hace nada, continuará con la tarifa predeterminada de su comunidad, Lean Power, con un ahorro general en su factura del 1-2% comparado con SCE. O puede explorar nuestras otras opciones de tarifa que ofrecen más energía renovable y la oportunidad de ser un campeón ambiental con costos comparables: Clean Power (Energía Limpia) que ofrece un ahorro general en su factura del 0-1% comparado con SCE y 100% Green Power (Energía Verde) que significa un aumento general en su factura del 7-9% comparado con SCE. Compare sus opciones de tarifas de Clean Power Alliance y de SCE en cleanpoweralliance.org/compare para decidir qué opción es la mejor para usted. No importa cuál sea la tarifa, Clean Power Alliance ofrece los beneficios compartidos de la administración y el control local, tarifas competitivas, y mayor contenido de energía renovable.

Los precios que se muestran abajo son para un cliente residencial o comercial típico. Ciertas tarifas comerciales pueden ser más altas. Por favor contacte a Clean Power Alliance para más información.

Para informarse más, cambiar su tarifa u optar por dejar el servicio y regresar a SCE, llámenos al 888-585-3788 (TTY 323-214-1296) o visite cleanpoweralliance.org.

它是如何運作的？

從**2020年9月**開始，根據您社區(精益電力)的選擇或您自選的費率選項成為清潔電力聯盟客戶。您現在是當地社區的一員，該社區致力於以有競爭力的價格購買更多可再生能源。清潔電力聯盟會購買您的電力，南加州愛迪生公司(SCE)會繼續提供電力。SCE將繼續發送您的電費單並解決所有服務問題。合格的客戶將繼續獲得財務援助，回扣和獎勵。請注意，您的鄰居可能已經啟動了清潔電力聯盟服務，但是由於SCE系統問題，您在我們這裡的註冊被推遲了。

有什麼益處？

如果您什麼都不做，則將繼續按照社區的預設精益發電率進行，與SCE相比，可節省總賬單的1-2%。或者，您也可以探索其他可提供更多可再生能源的費率選項，並有機會以可比較的成本成為環保冠軍：與SCE相比，清潔電力可節省總賬單的0-1%，與SCE相比，100%綠色電力的總賬單溢價為7-9%。前往cleanpoweralliance.org比較您的清潔電力聯盟和SCE費率選項去選擇最適合您的選項。無論費率如何，清潔能源聯盟都可提供本地管理和控制，具有競爭力的費率以及更高的可再生能源含量的共享優勢。

下面顯示的價格適用於典型的住宅或商業客戶。選擇商業費率的可能略高。請聯繫清潔電力聯盟以獲取更多信息。

了解詳情，更改費率或退出並返回SCE，請致電888-585-3788 (TTY 323-214-1296)與我們聯繫，或造訪cleanpoweralliance.org。