



PO Box 13696
Los Angeles, CA 90013

Presorted Standard
U.S. Postage

PAID

Los Angeles, CA
Permit No 2342

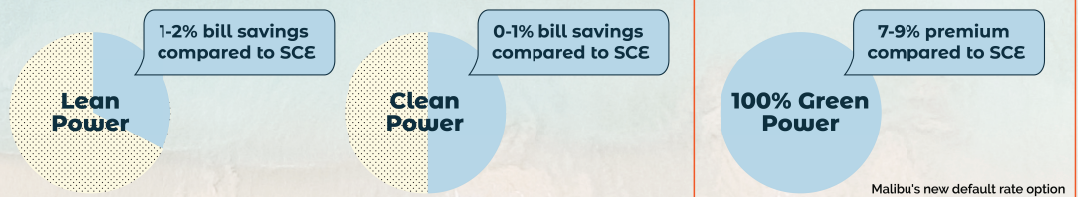
A notice from Clean Power Alliance and the City of Malibu to Malibu customers.

As of **October 2020**, you will start to receive 100% Green Power. You can change your rate at any time.

Your Rate Options

Rate comparisons for a typical residential or business customer.

Select commercial rates may be higher.



CleanPowerAlliance has been the electricity provider for the City of Malibu and 31 other communities since 2019. It purchases clean, renewable energy on behalf of its customers. The Clean Power Alliance provides green power which reduces air pollution and greenhouse gas emissions while creating jobs by funding the development of new clean energy options.

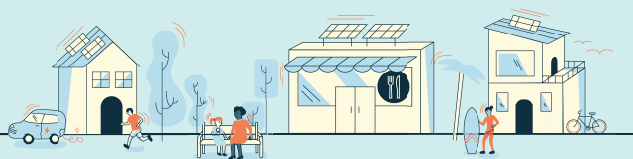
What changes are coming? The Malibu City Council voted in 2019 to adopt the Clean Power Alliance's 100% Green Power as the default rate for Malibu starting October 2020 to reduce the impacts of climate change and air pollution. You can change your rate at any time by calling 888-585-3788 or visiting cleanpoweralliance.org/rates.

What will it cost? **100% Green Power costs 7-9% more than SCE's default rate for most customers.** Residential customers enrolled in CARE, FERA or Medical Baseline will NOT pay this premium. If not you're not already enrolled, check your eligibility and apply through SCE by visiting sce.com/care or calling 800-798-5723.

Want a different rate? No problem! You can change your rate at no cost by selecting: Lean Power (36% renewable energy) or Clean Power (50% renewable energy). Compare your Clean Power Alliance and SCE rate options at cleanpoweralliance.org/compare.

For terms and conditions regarding your Clean Power Alliance service, please visit cleanpoweralliance.org/terms-and-conditions.

To learn more or change your rate,
visit cleanpoweralliance.org
or call 888-585-3788 (TTY 323-214-1296).





PO Box 13696
Los Angeles, CA 90013

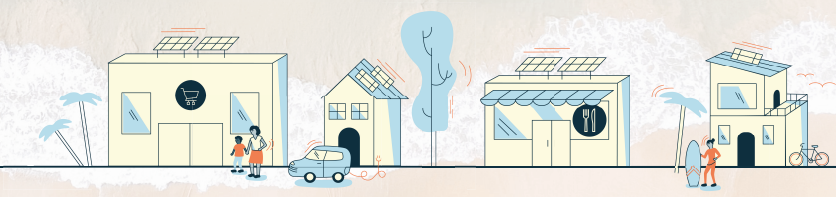
Presorted Standard
U.S. Postage

PAID

Los Angeles, CA
Permit No 2342

A notice from Clean Power Alliance and the City of Malibu to Malibu customers.

As of **October 2020**, you are now receiving 100% Green Power.
You can change your rate at any time.



CleanPowerAlliance has been the electricity provider for the City of Malibu and 31 other communities since 2019. It purchases clean, renewable energy on behalf of its customers. The Clean Power Alliance provides green power which reduces air pollution and greenhouse gas emissions while creating jobs by funding the development of new clean energy options

What changed? The Malibu City Council voted in 2019 to adopt the Clean Power Alliance's 100% Green Power as the default rate for Malibu starting October 2020 to reduce the impacts of climate change and air pollution. You can change your rate or opt out and return to Southern California Edison (SCE) at any time by visiting cleanpoweralliance.org/rates or calling 888-585-3788.

What will it cost? **100% Green Power will cost 7-9% more than SCE's default rate**, for typical customers. For customers enrolled in CARE, FERA or Medical Baseline will NOT pay this premium. If not already enrolled, check your eligibility and apply through SCE by calling 800-798-5723 or visiting sce.com/care.

Want a different rate? No problem! You can change your rate at no cost by selecting: Lean Power (36% renewable energy) or Clean Power (50% renewable energy). Compare your Clean Power Alliance and SCE rate options at cleanpoweralliance.org/compare.

For terms and conditions regarding your Clean Power Alliance service, please visit cleanpoweralliance.org/terms-and-conditions or call us at 888-585-3788.

To learn more, change your rate, or opt out and return to SCE at any time, visit cleanpoweralliance.org or call 888-585-3788 (TTY 323-214-1296).