



PO Box 13696
Los Angeles, CA 90013

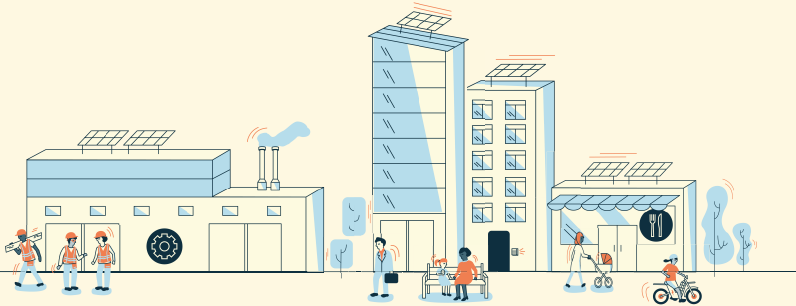
Presorted
Standard U.S.
Postage

PAID

Los Angeles, CA
Permit No 2342

Welcome! You can now pick where your electricity comes from!

You will soon enjoy the advantages of clean, renewable power at competitive rates! Starting June 2020, Clean Power Alliance will be your new electricity provider.



Access terms and conditions in other languages at cleanpoweralliance.org.

Terms and Conditions of Service

Clean Power Alliance electric generation rates are competitive. Available rates can be reviewed at cleanpoweralliance.org or by contacting Clean Power Alliance at 888-585-3788 (TTY 323-214-1296). **Clean Power Alliance rates are subject to change and any changes will be adopted at duly noticed public meetings of the Clean Power Alliance Board of Directors, available at cleanpoweralliance.org/agendas.**

Southern California Edison (SCE) collects from Clean Power Alliance customers authorized charges for delivering power to your home or business and for providing other services. These components of your electric bill are the same whether you buy electricity from Clean Power Alliance or SCE.

Southern California Edison also charges Clean Power Alliance customers a Power Charge Indifference Adjustment (PCIA) and a Franchise Fee Surcharge. Both are calculated based on the number of kilowatt hours used each month. The PCIA is intended to ensure that customers who switch to Clean Power Alliance pay for energy that was acquired by SCE to serve them prior to their switch. Note that Clean Power Alliance rates are competitive with SCE's rates, even with these fees.

Billing: Clean Power Alliance customers receive billing statements from SCE, just as they would under SCE bundled service, which include Clean Power Alliance charges for power generation. SCE will continue to charge you for transmission and distribution services they provide; this includes the cost of transmitting electricity to your home or business.

Enrollment: You will be automatically enrolled in Clean Power Alliance, unless you opt out, on your scheduled meter read date on or following June 1, 2020.

Discount Programs: If you are currently enrolled in the California Alternative Rates for Energy (CARE) program, the Family Electric Rate Assistance (FERA) program, Medical Baseline, Level Pay or Summer Discount Program, you will continue to receive all benefits and discounts as a Clean Power Alliance customer.

Opt out: You have the right to opt out without penalty at any time. You will not be charged any fees by Clean Power Alliance if you opt out or if you cancel electric service altogether (for example, if you move). However, customers who opt out of Clean Power Alliance after service launch may be charged a one-time account processing fee by SCE (currently 50 cents*), and will be prevented by SCE from returning to Clean Power Alliance

for a minimum of twelve months. By opting out, you will also be subject to SCE's then current rates and terms and conditions of service. For details on SCE's rates and terms and conditions, please visit sce.com/tnc.

If you opt out, you will still be charged for all electricity you used before the transfer of electric service. Accounts will be transferred when the electric meter is read and cannot be transferred during the middle of a billing cycle. In order for your request to be processed on your next meter read date, your request must be received at least 5 business days prior to the date on which the meter is read. To opt out, please call Clean Power Alliance at 888-585-3788 (TTY 323-214-1296) or visit cleanpoweralliance.org. Please have your electric bill handy so you have the information needed to process the request.

Failure to pay: Clean Power Alliance may transfer your account to SCE upon 14 calendar days' written notice to you if you fail to pay any portion of the Clean Power Alliance charges on your bill. If your service is transferred, you may be subject to additional requirements by SCE.

**SCE's one-time account processing fee is subject to change. View SCE's fees at www.sce.com/regulatory/tariff-books.*

This is the second of 4 mailed notices you will receive.

To learn more, change your rate, or opt out and remain with SCE, contact us at 888-585-3788 (TTY 323-214-1296) or visit cleanpoweralliance.org.



Your Rate Options.

Lean Power

1-2% bill savings compared to SCE

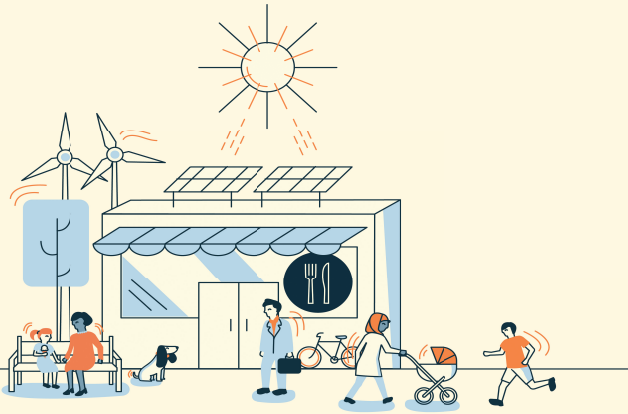
Clean Power

0-1% bill savings compared to SCE

100% Green Power

7-9% premium compared to SCE

Westlake Village's default rate option



Pricing shown above is for a typical residential or business customer. Select commercial rates may be higher. Please contact Clean Power Alliance for more information.

Interested in learning more about who we are?

Visit cleanpoweralliance.org.

Have questions? We're here to help. Call us at 888-585-3788 (TTY 323-214-1296).

¿Tiene preguntas? Visite cleanpoweralliance.org o llámenos al 888-585-3788 (TTY 323-214-1296).

如要瞭解詳情，請造訪 cleanpoweralliance.org 或致電 888-585-3788 (TTY 323-214-1296) 與我們聯繫。

추가 질문? 우리가 도와주고 있습니다. 전화 888-585-3788 (TTY 323-214-1296) 로 전화하십시오.

Имеютс якнамв опросъМѣкВ ашиму с луг а мЗ в он и те н а м оп те л 888-585-3788 (TTY 323-214-1296).

هل لديك أسئلة أخرى؟ نحن هنا للمساعدة. اتصل بنا على 888-585-3788. (رقم الهاتف النصي: 323-214-1296)

آیا سوالات بیشتری دارید؟ ما برای کمک به شما اینجا هستیم. 888-585-3788. (با ما تماس بگیرید: 323-214-1296)

How does it work?

Your city chose to offer you new clean energy options through Clean Power Alliance.

Residents and businesses in Westlake Village will automatically receive energy purchased by Clean Power Alliance that has the same renewable energy content as Southern California Edison (SCE) but at lower rates.

Starting on your first electricity meter read date in **June 2020**, you'll be automatically enrolled at the default level chosen by your city, **Lean Power**, with 36% renewable energy, but you can choose a different rate at any time. SCE will continue to deliver power, send bills, resolve any electricity service issues, and offer incentives to qualified customers.

What will it cost?

Lean Power provides a 1-2% overall bill savings compared to SCE. Compare your Clean Power Alliance and SCE rate options by using our bill comparison tool at cleanpoweralliance.org/compare to decide which option is best for your priorities.

What are my choices?

If you do nothing, you will continue at your community's default rate. Want a different rate? No problem. You can change your rate at any time by selecting one of Clean Power Alliance's other two rate options: **Clean Power (50% renewable energy)** or **100% Green Power**. You can also decide to remain with SCE by visiting cleanpoweralliance.org or calling us at 888-585-3788. Clean Power Alliance offers customers the shared benefits of local management, competitive rates, and higher renewable content.

To learn more, change your rate, or opt out and remain with SCE, contact us at 888-585-3788 (TTY 323-214-1296) or visit cleanpoweralliance.org.