

Welcome!

You will soon enjoy the advantages of clean, renewable power at competitive rates! Clean Power Alliance is your new electricity supply provider.

¡Bienvenido!

¡Pronto disfrutará las ventajas de energía limpia y renovable con tarifas competitivas! Clean Power Alliance es su nuevo proveedor de electricidad.

歡迎!

不久後，您將以具有競爭力的價格享受清潔的可再生電力所帶來的種種好處！清潔電力聯盟是您的新電力供應商。

환영합니다!

이제 곧 저렴한 재생가능전력을 저렴한 요금으로 이용하실 수 있습니다! 저희 클린 파워 얼라이언스에서 새롭게 전력을 공급해 드리겠습니다.

More questions? We're here to help. Call us at 888-585-3788 (TTY 323-214-1296).

Имеются к нам вопросы? Мы к Вашим услугам. Звоните нам по тел. 888-585-3788 (TTY 323-214-1296).

هل لديك أسئلة أخرى؟ نحن هنا للمساعدة. اتصل بنا على 888-585-3788. (رقم الهاتف النصي 323-214-1296)

آیا سوالات بیشتری دارید؟ ما برای کمک به شما اینجا هستیم. 888-585-3788. (با ما تماس بگیرید 323-214-1296)

Who are we? Clean Power Alliance believes in a clean energy future that is local, where communities are empowered and customers are given a choice about the source of their energy. We are California's new locally operated electricity provider made up of 31 public agencies across Los Angeles and Ventura counties, offering clean renewable energy at competitive rates.

Need financial assistance? The California Alternate Rates for Energy (CARE) Program reduces energy bills for eligible customers by about 30% and the Family Electric Rate Assistance (FERA) Program reduces energy bills by about 12%. Qualifications are based on participation in public assistance programs, or on household income. If someone in your household needs powered medical equipment, the Medical Baseline Program provides additional energy to your normal baseline allocation, saving you money. If you don't currently receive CARE, FERA, or Medical Baseline assistance, you can quickly and easily apply through SCE by calling them at 800-798-5723 or visiting their website at sce.com.

¿Quiénes somos? Clean Power Alliance cree en un futuro con energía limpia que es local, en el que las comunidades estén empoderadas y los clientes puedan elegir la fuente de su energía. Somos el nuevo proveedor de electricidad de California. Nuestra administración es local, estamos constituidos por 31 agencias públicas en los condados de Los Angeles y Ventura, y ofrecemos energía limpia y renovable con tarifas competitivas.

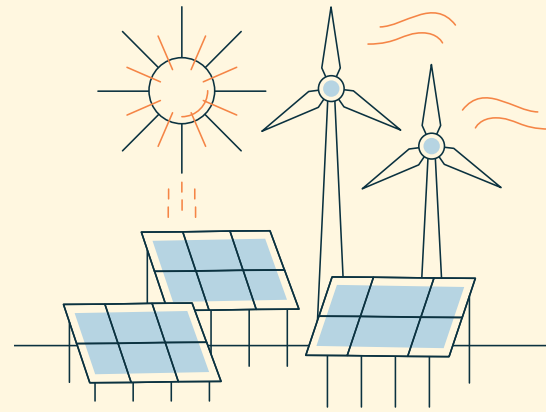
¿Necesita asistencia económica? El Programa California Alternative Rates for Energy (CARE) reduce en aproximadamente un 30% las facturas de energía para los clientes que reúnen los requisitos y el Programa Family Electric Rate Assistance (FERA) reduce las facturas de energía en aproximadamente un 12%. La aceptación en los programas se basa en la participación en programas de asistencia pública, o en el ingreso del hogar. Si alguien en su hogar necesita equipo médico que funciona con energía eléctrica, el Programa Medical Baseline ofrece energía adicional a su asignación normal básica y de ese modo le ahorra dinero. Si usted actualmente no recibe asistencia de CARE, FERA o Medical Baseline, puede solicitarla rápida y fácilmente por medio de SCE llamando al 800-798-5723 o visitando su sitio web en sce.com.

클린 파워 얼라이언스 소개 클린 파워 얼라이언스는 우리 지역에서 전력을 생산해 지역사회에 보탬이 되고 고객 스스로 청정 에너지를 선택할 수 있는 밝은 세상을 만들어 갑니다. 로스앤젤레스 및 벤치카운티 전역에서 31개 공공기관이 힘을 합쳐 새로 운영하게 된 전력 공급업체로, 청정한 재생가능 에너지를 저렴한 가격에 공급해 드립니다.

재정 보조가 필요하신가요? 캘리포니아 에너지 대체요금 (CARE) 프로그램의 경우 소정 요건에 부합하는 고객님의 에너지 요금을 약 30%, 가족 전기 요금 지원 (FERA) 프로그램의 경우 약 12% 할인해 드립니다. 소정 요건은 재정 보조 프로그램 참여 여부나 가구소득 기준에 따라 정합니다. 함께 거주하는 가족이 전동 의료기기를 사용해야 하는 경우, 의료 기본공제 프로그램 (Medical Baseline Program)을 통해 정상 기본공제 이외에도 전기를 추가로 제공해 비용을 절감해 드립니다. 현재 CARE, FERA, 또는 의료 기본공제 보조를 받고 있지 않으시다면 전화 800-798-5723 또는 웹사이트 sce.com 으로 SCE에 연락해 쉽고 빠르게 신청하실 수 있습니다.

機構簡介清潔電力聯盟認為，清潔能源的未來應以本地為根基，賦予本地社區充分的權限，並給予用戶對於其能源來源的選擇權。我們是加州新的本地營運電力供應商，由來自洛杉磯和范杜拉縣31個公營機構組成，以具有競爭力的價格提供清潔的可再生能源。

需要補助嗎？加州低收入專享費率 (CARE) 計畫能讓符合條件的用戶減少大約30%的電費，聯邦電費補助 (FERA) 計劃則能減少大約12%的電費。用戶是否符合條件依其參加公共援助計畫的情況或根據家庭收入狀況而定。如果您家中有人需要電力醫療設備，醫療基線 (Medical Baseline) 計畫能在您平常的基本電量分配外提供額外電量，為您節省費用。如果您目前不享有 CARE、FERA 或 Medical Baseline 計畫補助，您可以致電800-798-5723或造訪 sce.com 網站，透過SCE輕鬆快速申請參加這些計畫。



Terms and Conditions of Service

Clean Power Alliance electric generation rates are competitive. Available rates can be reviewed at cleanpoweralliance.org or by contacting Clean Power Alliance at 888-585-3788. Any changes to Clean Power Alliance rates will be adopted at duly noticed public meetings of the Clean Power Alliance Board of Directors.

Southern California Edison (SCE) collects from Clean Power Alliance customers authorized charges for delivering power to your home or business and for providing other services. These components of your electric bill are the same whether you buy electricity from Clean Power Alliance or SCE.

SCE also charges Clean Power Alliance customers a Power Charge Indifference Adjustment (PCIA) and a Franchise Fee Surcharge. Both are calculated based on the number of kilowatt hours used each month. The PCIA is intended to ensure that customers who switch to Clean Power Alliance pay for energy that was acquired by SCE to serve them prior to their switch. Note that Clean Power Alliance rates are competitive with SCE's rates, even with these fees.

Billing: Each month, Clean Power Alliance customers receive a single monthly bill from SCE, just as they would under SCE bundled service. This bill includes all of the recent electric charges, including Clean Power Alliance's power generation charges. SCE will continue to charge you for Transmission and Distribution services they provide; this includes the cost of transmitting electricity directly to your home or business.

Enrollment: Starting February 2019, Clean Power Alliance will become the default electric power provider for your area. You will be automatically enrolled in Clean Power Alliance on your next scheduled meter read date on or following February 1, 2019.

Discount Programs: If you are currently enrolled in the California Alternative Rates for Energy (CARE) program, the Family Electric Rate Assistance (FERA) program, Medical Baseline, Level Pay or Summer Discount Program, you will continue to receive all benefits and discounts upon enrollment in Clean Power Alliance.

Opt out: You have the right to opt out without penalty any time. You will not be charged any fees by Clean Power Alliance if you opt out or if you cancel electric service altogether (for example, if you move). However, customers who opt out of Clean Power Alliance after service launch may be charged a one-time account processing fee by SCE, and will be prevented by SCE from returning to Clean Power Alliance for a minimum of twelve months. By opting out, you will also be subject to SCE's then current rates and terms and conditions of service. For details on SCE's rates and terms and conditions, please visit sce.com. If you opt out, you will still be charged for all electricity you used before the transfer of electric service. Accounts will be transferred on the day the electric meter is read and cannot be transferred during the middle of a billing cycle. In order for your request to be processed on your next meter read date, your request must be received at least 5 business days prior to the date on which the meter is read. To opt out, please call Clean Power Alliance at 888-585-3788 or visit cleanpoweralliance.org. Please have your electric bill handy so you have the information needed to process the request.

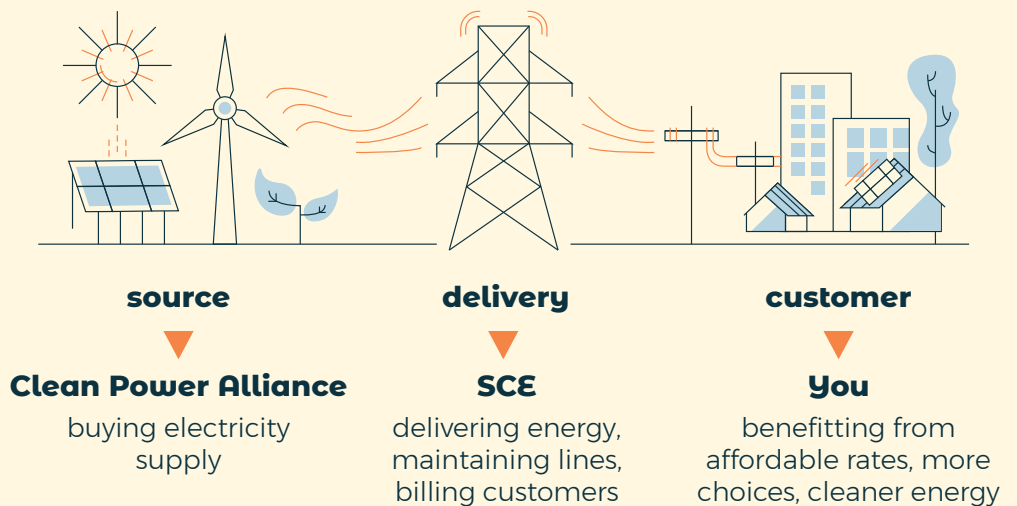
Failure to pay: Clean Power Alliance may transfer your account to SCE upon 14 calendar days' written notice to you if you fail to pay any portion of the Clean Power Alliance charges on your bill. If your service is transferred, you may be subject to additional requirements by SCE.

Access terms and conditions in other languages at cleanpoweralliance.org.

How does it work?

Clean Power Alliance purchases clean power and SCE delivers it. **Nothing else changes**—SCE will continue to deliver power to your home, send just one bill, be responsible for resolving any issues with your electricity service, and qualified customers will continue to have access to financial assistance, rebates, and incentives.

Starting in February 2019, you will be automatically enrolled in **100% Green Power** which provides 100% renewable energy content and gives residents the opportunity to be environmental champions, leading the way to a greener future. Customers enrolled in discount programs such as CARE, FERA or Medical Baseline and enrolled in 100% Green Power will be charged the SAME rates as they would pay to Southern California Edison (SCE), and therefore will be participating in the green economy at NO ADDITIONAL COST. **For more details about your rates visit cleanpoweralliance.org.**



The choice is yours!

You can change your service at any time by selecting one of Clean Power Alliance's other two rate options: Lean Power, which provides 36% renewable content at the lowest possible cost, and Clean Power, which provides 50% renewable content and the opportunity to support building a cleaner future. **To learn more, change your rate, or opt out visit cleanpoweralliance.org or contact us at 888-585-3788 (TTY 323-214-1286).**

¿Cómo funciona?

Clean Power Alliance compra energía limpia y SCE la entrega. **Nada más cambia**—SCE seguirá transmitiendo energía a su hogar, enviando una sola factura, seguirá siendo responsable de resolver cualquier problema con su servicio eléctrico, y los clientes que reúnen los requisitos seguirán teniendo acceso a asistencia e incentivos económicos y reembolsos.

A partir de febrero de 2019, usted será inscrito automáticamente en **100% Green Power** que ofrece energía con un contenido renovable de 100% y que da a los residentes la oportunidad de ser campeones de la energía que lideran el camino a un futuro más verde. A los clientes inscritos en programas con descuento como CARE, FERA o Medical Baseline e inscritos en 100% Green Power se les cobrará las MISMAS tarifas que pagarían a Southern California Edison (SCE) y por lo tanto estarían participando en la economía verde SIN NINGÚN COSTO ADICIONAL. Para más detalles sobre sus tarifas visite cleanpoweralliance.org.

¡Usted elije!

Puede cambiar su servicio en cualquier momento seleccionando unas de las otras dos opciones de tarifas de Clean Power Alliance: Lean Power, que ofrece energía con un contenido renovable de 36% al menor costo posible y Clean Power que ofrece energía con un contenido renovable de 50% y la oportunidad de ayudar a crear un futuro más limpio. **Para informarse más, cambiar su tarifa u optar por dejar el servicio visite cleanpoweralliance.org o contáctenos al 888-585-3788 (TTY 323-214-1286).**

어떤 방식으로 운영되나요?

클린 파워 얼라이언스에서 청정전력을 구매하고 이를 SCE에서 고객 여러분께 전달하는 방식입니다. **그 외에 달라지는 점은 없습니다** - 종전대로 SCE에서 각 가정에 배전, 고지서 발송, 전기 서비스 관련 문제 해결을 담당하게 되며, 소정 요건에 부합하는 고객은 재정 보조, 리베이트, 인센티브를 계속해서 이용하실 수 있습니다.

재생가능 에너지 비율 100%인 **100% 그린 파워**에 2019년 2월 부로 자동 등록되므로, 이를 통해 청정 에너지 미래 구축에 기여하고 친환경 운동에 앞장서지게 됩니다. CARE, FERA, 의료 기본공제 (Medical Baseline) 등 할인 프로그램과 100% 그린 파워에 등록하신 경우 SCE와 동일 요금이 적용되므로, 추가 비용 부담 없이 친환경 경제에 동참하게 됩니다. **요율에 관한 자세한 내용은 cleanpoweralliance.org에서 살펴보세요.**

자유롭게 선택하세요!

클린 파워 얼라이언스에서 제공하는 두 종류의 기타 요금제, 즉 재생가능 에너지 비율이 36%로 가장 저렴한 요금을 자랑하는 린 파워(Lean Power)와 동 비율이 50%로 청정한 미래를 구축하는 데 기여하게 될 클린 파워(Clean Power) 중에서 선택하실 수 있습니다. **자세한 정보, 요율 변경, 불참 요청이 필요한 경우 cleanpoweralliance.org를 방문하거나 888-585-3788(청각장애이용 전화 323-214-1286)로 전화주시기 바랍니다.**

它是如何運作的?

清潔電力聯盟購買清潔電力後由SCE負責輸送。其他一切都沒有改變—SCE繼續輸送電力到您的住家, 寄送一張電費帳單, 負責解決與電力服務有關的任何問題, 同時符合條件的用戶也會繼續享有補助、退款和獎勵。

從2019年2月開始, 您將自動被登記參加100% Green Power方案, 該方案提供含量100%的可再生能源, 並讓居民有機會成為能源鬥士, 引領社會走向更環保的未來。享有CARE、FERA或Medical Baseline等優惠計畫並且登記參加100% Green Power方案的用戶會被收取和他們支付給SCE相同的費率, 也就是說這些用戶將在無需支付額外費用的情況下參加綠色經濟。如需瞭解各項方案的詳情, 請造訪 cleanpoweralliance.org。

選擇權在您!

您可以在任何時候, 選用清潔電力聯盟另外兩種方案之一, 來變更您的服務: Lean Power方案以盡可能最低的價格提供含量佔36%的可再生能源, 而Clean Power方案則提供含量佔50%的可再生能源和支持創建更清潔未來的機會。如要瞭解詳情、變更方案、或選擇退出, 請前往 cleanpoweralliance.org, 或致電888-585-3788 (TTY 323-214-1286) 與我們聯絡。